

ISO 9001 Registered



# TIG TORCH SERIES

High Performance  
TIG Welding Torches







# Genuine Tig Welding Torches

## ① A Wealth of Technical Know How

- **OTC-DAIHEN Corporation**, as the world-leading manufacturer for welding machines, can also supply TIG welding designed with years of technical experience in the welding field for reliability.
- Our engineering expertise and automated production line manufacture high quality TIG torches using the finest materials, which a welder can rely on.

## ② A Variety of Styles

- **Flexible Type**  
The TIG torch body angle is easily and freely changed according to the welder's welding position preference.
- **Modular Design Flexible Type**  
Reliability at a low cost for modular design flexibility where the torch head, coil element, rubber boot and torch body are easily assembled or disassembled by customers.
- **Pencil Type**  
This type is suitable for automatic welding of long length structures.

## ③ Handle Prevents High Frequency

- TIG Torch handles design with special high voltage insulating silicone rubber material that prevents high frequency current leakage.
- Also, durable to high temperature and impact resistant.

## ④ Easy Tungsten Release Adjustment Cap

- The torch caps are of dissimilar metals, one of steel, the other of brass for collet adjustment and easy removal even if they are expanded by high temperature.
- Optional short cap is effective for narrow welding spaces.

## ⑤ Teflon Gaskets (Insulator)

- Torches are fitted with Teflon gaskets at the nozzle and cap for proper gas sealing as well as high frequency insulation.

## ⑥ Soft Hoses with Durability

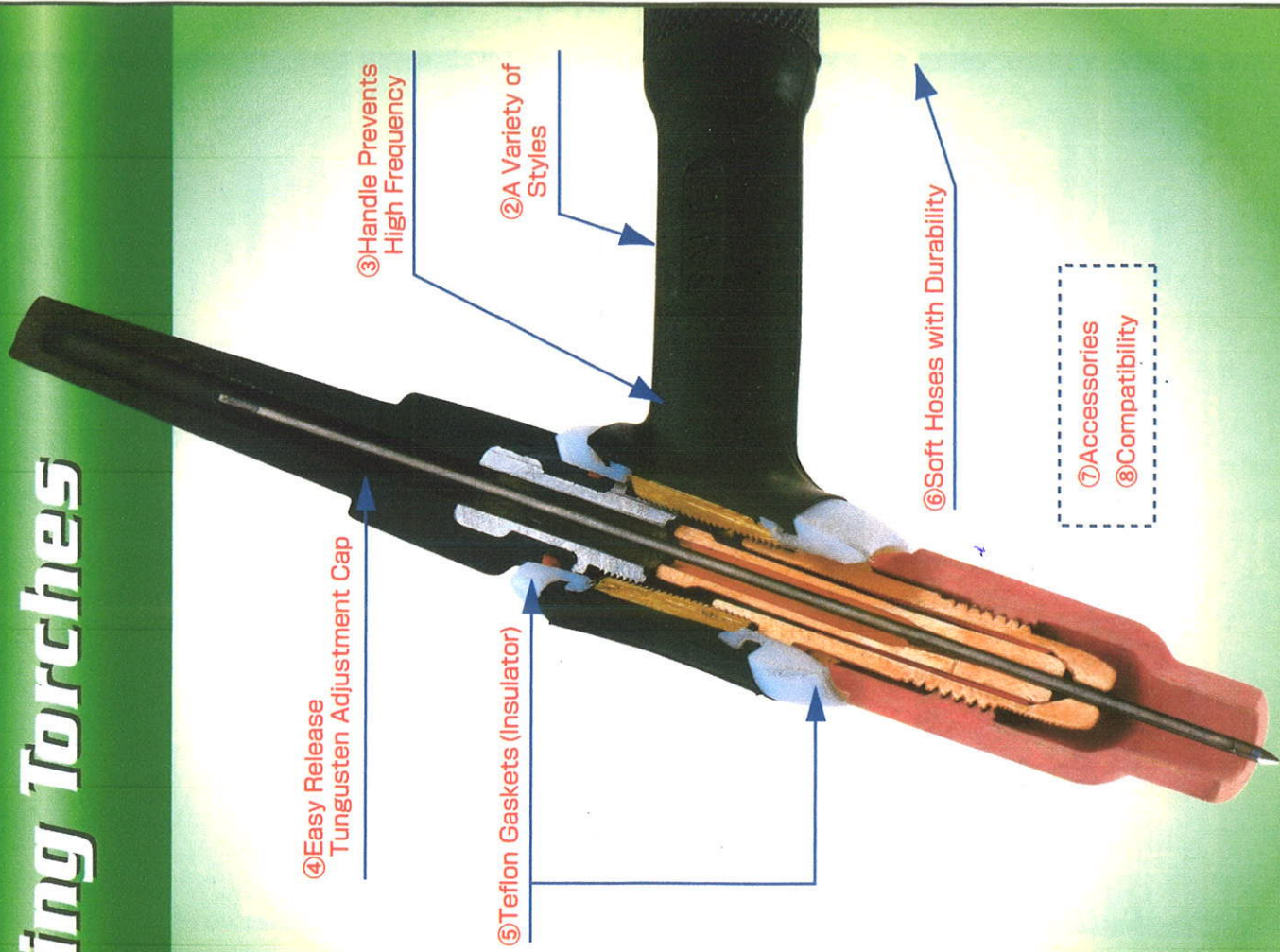
- The Water hose, gas hose and power cable are made of high quality and high temperature rubber tubing. The soft hoses with durability ensure easier operation while giving longer life.

## ⑦ Accessories

- We have a large variety of accessories, available to include various sizes and lengths of nozzles, collet bodies and caps. Push button torch switches or Foot control switches and other accessories are also available.





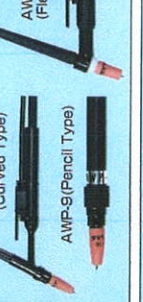
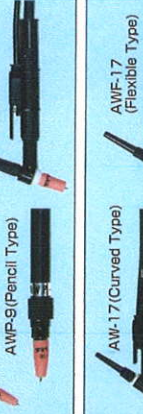


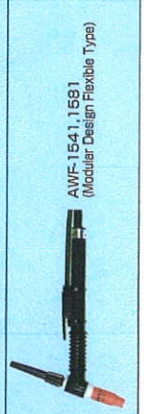



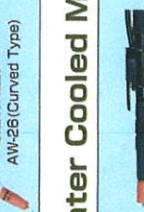

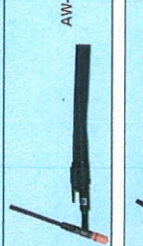
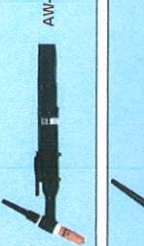
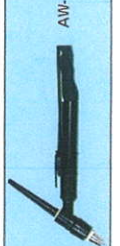
## ⑧ Compatibility

- Our TIG torches are Linde style with consumable parts compatible with Weldcraft and other torch manufactures.

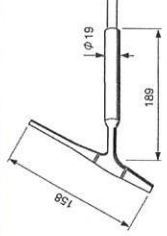




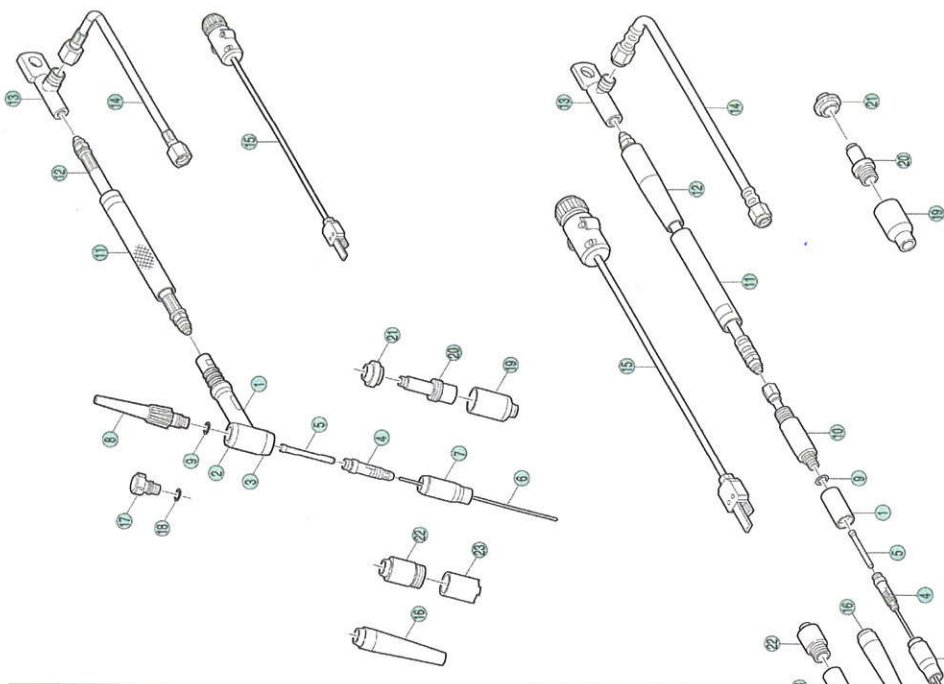
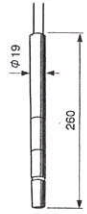
# Air Cooled Models

 <b>AW-4 (Curved Type)</b>	<p><b>Smallest TIG Torch, suitable for Micro TIG Welding</b></p> <table border="1"> <tr><th>Capacity(A)</th><th>Duty</th><th>Cable</th><th>Applicable Electrode Size</th></tr> <tr><td>AC DC</td><td>(%)</td><td>(m)</td><td>(mm)</td></tr> <tr><td>Air</td><td>50</td><td>60 4x8</td><td>(0.5),1.0,1.6</td></tr> </table>	Capacity(A)	Duty	Cable	Applicable Electrode Size	AC DC	(%)	(m)	(mm)	Air	50	60 4x8	(0.5),1.0,1.6				
Capacity(A)	Duty	Cable	Applicable Electrode Size														
AC DC	(%)	(m)	(mm)														
Air	50	60 4x8	(0.5),1.0,1.6														
 <b>AW-5 (Curved Type)</b>	<p><b>Smallest TIG Torch, suitable for Micro TIG Welding</b></p> <table border="1"> <tr><th>Capacity(A)</th><th>Duty</th><th>Cable</th><th>Applicable Electrode Size</th></tr> <tr><td>AC DC</td><td>(%)</td><td>(m)</td><td>(mm)</td></tr> <tr><td>Air</td><td>50</td><td>60 4x8</td><td>(0.5),1.0,1.6</td></tr> </table> <p>※ Longer Handle more than AW-5</p>	Capacity(A)	Duty	Cable	Applicable Electrode Size	AC DC	(%)	(m)	(mm)	Air	50	60 4x8	(0.5),1.0,1.6				
Capacity(A)	Duty	Cable	Applicable Electrode Size														
AC DC	(%)	(m)	(mm)														
Air	50	60 4x8	(0.5),1.0,1.6														
 <b>AWP-5 (Pencil Type)</b>	<p><b>Smallest TIG Torch, suitable for Micro TIG Welding</b></p> <table border="1"> <tr><th>Capacity(A)</th><th>Duty</th><th>Cable</th><th>Applicable Electrode Size</th></tr> <tr><td>AC DC</td><td>(%)</td><td>(m)</td><td>(mm)</td></tr> <tr><td>Air</td><td>50</td><td>60 4x8</td><td>(0.5),1.0,1.6</td></tr> </table>	Capacity(A)	Duty	Cable	Applicable Electrode Size	AC DC	(%)	(m)	(mm)	Air	50	60 4x8	(0.5),1.0,1.6				
Capacity(A)	Duty	Cable	Applicable Electrode Size														
AC DC	(%)	(m)	(mm)														
Air	50	60 4x8	(0.5),1.0,1.6														
 <b>AW-9 (Curved Type)</b>	<p><b>Light Weight TIG Torch, suitable for Thin gauge materials</b></p> <table border="1"> <tr><th>Capacity(A)</th><th>Duty</th><th>Cable</th><th>Applicable Electrode Size</th></tr> <tr><td>AC DC</td><td>(%)</td><td>(m)</td><td>(mm)</td></tr> <tr><td>Cooling</td><td>AC DC</td><td>(%)</td><td>(mm)</td></tr> <tr><td>Air</td><td>120 90</td><td>50 4x8</td><td>(0.5),1.0,1.6</td></tr> </table>	Capacity(A)	Duty	Cable	Applicable Electrode Size	AC DC	(%)	(m)	(mm)	Cooling	AC DC	(%)	(mm)	Air	120 90	50 4x8	(0.5),1.0,1.6
Capacity(A)	Duty	Cable	Applicable Electrode Size														
AC DC	(%)	(m)	(mm)														
Cooling	AC DC	(%)	(mm)														
Air	120 90	50 4x8	(0.5),1.0,1.6														
 <b>AWP-9 (Pencil Type)</b>	<p><b>Light Weight TIG Torch, suitable for Thin gauge materials</b></p> <table border="1"> <tr><th>Capacity(A)</th><th>Duty</th><th>Cable</th><th>Applicable Electrode Size</th></tr> <tr><td>AC DC</td><td>(%)</td><td>(m)</td><td>(mm)</td></tr> <tr><td>Cooling</td><td>AC DC</td><td>(%)</td><td>(mm)</td></tr> <tr><td>Air</td><td>120 90</td><td>50 4x8</td><td>(0.5),1.0,1.6</td></tr> </table>	Capacity(A)	Duty	Cable	Applicable Electrode Size	AC DC	(%)	(m)	(mm)	Cooling	AC DC	(%)	(mm)	Air	120 90	50 4x8	(0.5),1.0,1.6
Capacity(A)	Duty	Cable	Applicable Electrode Size														
AC DC	(%)	(m)	(mm)														
Cooling	AC DC	(%)	(mm)														
Air	120 90	50 4x8	(0.5),1.0,1.6														
 <b>AWF-9 (Flexible Type)</b>	<p><b>Light Weight TIG Torch, suitable for Thin gauge materials</b></p> <table border="1"> <tr><th>Capacity(A)</th><th>Duty</th><th>Cable</th><th>Applicable Electrode Size</th></tr> <tr><td>AC DC</td><td>(%)</td><td>(m)</td><td>(mm)</td></tr> <tr><td>Cooling</td><td>AC DC</td><td>(%)</td><td>(mm)</td></tr> <tr><td>Air</td><td>120 90</td><td>50 4x8</td><td>(0.5),1.0,1.6</td></tr> </table>	Capacity(A)	Duty	Cable	Applicable Electrode Size	AC DC	(%)	(m)	(mm)	Cooling	AC DC	(%)	(mm)	Air	120 90	50 4x8	(0.5),1.0,1.6
Capacity(A)	Duty	Cable	Applicable Electrode Size														
AC DC	(%)	(m)	(mm)														
Cooling	AC DC	(%)	(mm)														
Air	120 90	50 4x8	(0.5),1.0,1.6														
 <b>AW-17 (Curved Type)</b>	<p><b>High Capacity TIG Torch, suitable for Thin to Medium gauge materials</b></p> <table border="1"> <tr><th>Capacity(A)</th><th>Duty</th><th>Cable</th><th>Applicable Electrode Size</th></tr> <tr><td>AC DC</td><td>(%)</td><td>(m)</td><td>(mm)</td></tr> <tr><td>Cooling</td><td>AC DC</td><td>(%)</td><td>(mm)</td></tr> <tr><td>Air</td><td>150 130</td><td>50 4x8</td><td>(0.5),1.0,1.6,(2.0),(2.4)</td></tr> </table>	Capacity(A)	Duty	Cable	Applicable Electrode Size	AC DC	(%)	(m)	(mm)	Cooling	AC DC	(%)	(mm)	Air	150 130	50 4x8	(0.5),1.0,1.6,(2.0),(2.4)
Capacity(A)	Duty	Cable	Applicable Electrode Size														
AC DC	(%)	(m)	(mm)														
Cooling	AC DC	(%)	(mm)														
Air	150 130	50 4x8	(0.5),1.0,1.6,(2.0),(2.4)														
 <b>AWP-17 (Pencil Type)</b>	<p><b>High Capacity TIG Torch, suitable for Thin to Medium gauge materials</b></p> <table border="1"> <tr><th>Capacity(A)</th><th>Duty</th><th>Cable</th><th>Applicable Electrode Size</th></tr> <tr><td>AC DC</td><td>(%)</td><td>(m)</td><td>(mm)</td></tr> <tr><td>Cooling</td><td>AC DC</td><td>(%)</td><td>(mm)</td></tr> <tr><td>Air</td><td>150 130</td><td>50 4x8</td><td>(0.5),1.0,1.6,(2.0),(2.4)</td></tr> </table>	Capacity(A)	Duty	Cable	Applicable Electrode Size	AC DC	(%)	(m)	(mm)	Cooling	AC DC	(%)	(mm)	Air	150 130	50 4x8	(0.5),1.0,1.6,(2.0),(2.4)
Capacity(A)	Duty	Cable	Applicable Electrode Size														
AC DC	(%)	(m)	(mm)														
Cooling	AC DC	(%)	(mm)														
Air	150 130	50 4x8	(0.5),1.0,1.6,(2.0),(2.4)														
 <b>AWF-154.1, 159.1 (Modular Design Flexible Type)</b>	<p><b>High Capacity TIG Torch, suitable for Medium gauge materials</b></p> <table border="1"> <tr><th>Capacity(A)</th><th>Duty</th><th>Cable</th><th>Applicable Electrode Size</th></tr> <tr><td>AC DC</td><td>(%)</td><td>(m)</td><td>(mm)</td></tr> <tr><td>Cooling</td><td>AC DC</td><td>(%)</td><td>(mm)</td></tr> <tr><td>Air</td><td>150 130</td><td>50 4x8</td><td>(0.5),1.0,1.6,(2.0),(2.4)</td></tr> </table>	Capacity(A)	Duty	Cable	Applicable Electrode Size	AC DC	(%)	(m)	(mm)	Cooling	AC DC	(%)	(mm)	Air	150 130	50 4x8	(0.5),1.0,1.6,(2.0),(2.4)
Capacity(A)	Duty	Cable	Applicable Electrode Size														
AC DC	(%)	(m)	(mm)														
Cooling	AC DC	(%)	(mm)														
Air	150 130	50 4x8	(0.5),1.0,1.6,(2.0),(2.4)														
 <b>AW-204.1, 208.1 (Curved Type)</b>	<p><b>High Capacity TIG Torch, suitable for Medium gauge materials</b></p> <table border="1"> <tr><th>Capacity(A)</th><th>Duty</th><th>Cable</th><th>Applicable Electrode Size</th></tr> <tr><td>AC DC</td><td>(%)</td><td>(m)</td><td>(mm)</td></tr> <tr><td>Cooling</td><td>AC DC</td><td>(%)</td><td>(mm)</td></tr> <tr><td>Air</td><td>200 160</td><td>35 4x8</td><td>(0.5),1.0,1.6,(2.0),(2.4),(3.0),(3.2),(4.0)</td></tr> </table>	Capacity(A)	Duty	Cable	Applicable Electrode Size	AC DC	(%)	(m)	(mm)	Cooling	AC DC	(%)	(mm)	Air	200 160	35 4x8	(0.5),1.0,1.6,(2.0),(2.4),(3.0),(3.2),(4.0)
Capacity(A)	Duty	Cable	Applicable Electrode Size														
AC DC	(%)	(m)	(mm)														
Cooling	AC DC	(%)	(mm)														
Air	200 160	35 4x8	(0.5),1.0,1.6,(2.0),(2.4),(3.0),(3.2),(4.0)														
 <b>AWP-204.1, 208.1 (Modular Design Flexible Type)</b>	<p><b>High Capacity TIG Torch, suitable for Medium gauge materials</b></p> <table border="1"> <tr><th>Capacity(A)</th><th>Duty</th><th>Cable</th><th>Applicable Electrode Size</th></tr> <tr><td>AC DC</td><td>(%)</td><td>(m)</td><td>(mm)</td></tr> <tr><td>Cooling</td><td>AC DC</td><td>(%)</td><td>(mm)</td></tr> <tr><td>Air</td><td>200 160</td><td>35 4x8</td><td>(0.5),1.0,1.6,(2.0),(2.4),(3.0),(3.2),(4.0)</td></tr> </table>	Capacity(A)	Duty	Cable	Applicable Electrode Size	AC DC	(%)	(m)	(mm)	Cooling	AC DC	(%)	(mm)	Air	200 160	35 4x8	(0.5),1.0,1.6,(2.0),(2.4),(3.0),(3.2),(4.0)
Capacity(A)	Duty	Cable	Applicable Electrode Size														
AC DC	(%)	(m)	(mm)														
Cooling	AC DC	(%)	(mm)														
Air	200 160	35 4x8	(0.5),1.0,1.6,(2.0),(2.4),(3.0),(3.2),(4.0)														
 <b>AW-26 (Curved Type)</b>	<p><b>Highest Capacity and Heavy Duty TIG Torch, suitable for Medium gauge materials</b></p> <table border="1"> <tr><th>Capacity(A)</th><th>Duty</th><th>Cable</th><th>Applicable Electrode Size</th></tr> <tr><td>AC DC</td><td>(%)</td><td>(m)</td><td>(mm)</td></tr> <tr><td>Cooling</td><td>AC DC</td><td>(%)</td><td>(mm)</td></tr> <tr><td>Air</td><td>200 160</td><td>50 4x8</td><td>(0.5),1.0,1.6,(2.0),(2.4),(3.0),(3.2),(4.0)</td></tr> </table>	Capacity(A)	Duty	Cable	Applicable Electrode Size	AC DC	(%)	(m)	(mm)	Cooling	AC DC	(%)	(mm)	Air	200 160	50 4x8	(0.5),1.0,1.6,(2.0),(2.4),(3.0),(3.2),(4.0)
Capacity(A)	Duty	Cable	Applicable Electrode Size														
AC DC	(%)	(m)	(mm)														
Cooling	AC DC	(%)	(mm)														
Air	200 160	50 4x8	(0.5),1.0,1.6,(2.0),(2.4),(3.0),(3.2),(4.0)														
 <b>AWP-26 (Flexible Type)</b>	<p><b>Highest Capacity and Heavy Duty TIG Torch, suitable for Medium gauge materials</b></p> <table border="1"> <tr><th>Capacity(A)</th><th>Duty</th><th>Cable</th><th>Applicable Electrode Size</th></tr> <tr><td>AC DC</td><td>(%)</td><td>(m)</td><td>(mm)</td></tr> <tr><td>Cooling</td><td>AC DC</td><td>(%)</td><td>(mm)</td></tr> <tr><td>Air</td><td>200 160</td><td>50 4x8</td><td>(0.5),1.0,1.6,(2.0),(2.4),(3.0),(3.2),(4.0)</td></tr> </table>	Capacity(A)	Duty	Cable	Applicable Electrode Size	AC DC	(%)	(m)	(mm)	Cooling	AC DC	(%)	(mm)	Air	200 160	50 4x8	(0.5),1.0,1.6,(2.0),(2.4),(3.0),(3.2),(4.0)
Capacity(A)	Duty	Cable	Applicable Electrode Size														
AC DC	(%)	(m)	(mm)														
Cooling	AC DC	(%)	(mm)														
Air	200 160	50 4x8	(0.5),1.0,1.6,(2.0),(2.4),(3.0),(3.2),(4.0)														
 <b>AW-25 (Flexible Type)</b>	<p><b>Smallest Light Weight TIG Torch, suitable for Medium gauge materials</b></p> <table border="1"> <tr><th>Capacity(A)</th><th>Duty</th><th>Cable</th><th>Applicable Electrode Size</th></tr> <tr><td>AC DC</td><td>(%)</td><td>(m)</td><td>(mm)</td></tr> <tr><td>Cooling</td><td>AC DC</td><td>(%)</td><td>(mm)</td></tr> <tr><td>Water</td><td>200 160</td><td>50 4x8</td><td>(0.5),1.0,1.6,(2.0),(2.4),(3.0),(3.2)</td></tr> </table>	Capacity(A)	Duty	Cable	Applicable Electrode Size	AC DC	(%)	(m)	(mm)	Cooling	AC DC	(%)	(mm)	Water	200 160	50 4x8	(0.5),1.0,1.6,(2.0),(2.4),(3.0),(3.2)
Capacity(A)	Duty	Cable	Applicable Electrode Size														
AC DC	(%)	(m)	(mm)														
Cooling	AC DC	(%)	(mm)														
Water	200 160	50 4x8	(0.5),1.0,1.6,(2.0),(2.4),(3.0),(3.2)														
 <b>AW-20 (Curved Type)</b>	<p><b>Heavy Duty TIG Torch, suitable for Medium gauge materials</b></p> <table border="1"> <tr><th>Capacity(A)</th><th>Duty</th><th>Cable</th><th>Applicable Electrode Size</th></tr> <tr><td>AC DC</td><td>(%)</td><td>(m)</td><td>(mm)</td></tr> <tr><td>Cooling</td><td>AC DC</td><td>(%)</td><td>(mm)</td></tr> <tr><td>Water</td><td>200 160</td><td>100 4x8</td><td>(0.5),1.0,1.6,(2.0),(2.4),(3.0),(3.2)</td></tr> </table>	Capacity(A)	Duty	Cable	Applicable Electrode Size	AC DC	(%)	(m)	(mm)	Cooling	AC DC	(%)	(mm)	Water	200 160	100 4x8	(0.5),1.0,1.6,(2.0),(2.4),(3.0),(3.2)
Capacity(A)	Duty	Cable	Applicable Electrode Size														
AC DC	(%)	(m)	(mm)														
Cooling	AC DC	(%)	(mm)														
Water	200 160	100 4x8	(0.5),1.0,1.6,(2.0),(2.4),(3.0),(3.2)														
 <b>AW-18 (Curved Type)</b>	<p><b>Heavy Duty TIG Torch, suitable for Medium to thick gauge materials</b></p> <table border="1"> <tr><th>Capacity(A)</th><th>Duty</th><th>Cable</th><th>Applicable Electrode Size</th></tr> <tr><td>AC DC</td><td>(%)</td><td>(m)</td><td>(mm)</td></tr> <tr><td>Cooling</td><td>AC DC</td><td>(%)</td><td>(mm)</td></tr> <tr><td>Water</td><td>300 260</td><td>100 4x8</td><td>(0.5),1.0,1.6,(2.0),(2.4),(3.0),(3.2),(4.0)</td></tr> </table>	Capacity(A)	Duty	Cable	Applicable Electrode Size	AC DC	(%)	(m)	(mm)	Cooling	AC DC	(%)	(mm)	Water	300 260	100 4x8	(0.5),1.0,1.6,(2.0),(2.4),(3.0),(3.2),(4.0)
Capacity(A)	Duty	Cable	Applicable Electrode Size														
AC DC	(%)	(m)	(mm)														
Cooling	AC DC	(%)	(mm)														
Water	300 260	100 4x8	(0.5),1.0,1.6,(2.0),(2.4),(3.0),(3.2),(4.0)														
 <b>AW-12 (Curved Type)</b>	<p><b>Heavy Duty TIG Torch, suitable for Medium to thick gauge materials</b></p> <table border="1"> <tr><th>Capacity(A)</th><th>Duty</th><th>Cable</th><th>Applicable Electrode Size</th></tr> <tr><td>AC DC</td><td>(%)</td><td>(m)</td><td>(mm)</td></tr> <tr><td>Cooling</td><td>AC DC</td><td>(%)</td><td>(mm)</td></tr> <tr><td>Water</td><td>500 400</td><td>100 4x8</td><td>(1.0),1.6,(2.0),(2.4),(3.0),(3.2),(4.0),(4.8),(6.4)</td></tr> </table>	Capacity(A)	Duty	Cable	Applicable Electrode Size	AC DC	(%)	(m)	(mm)	Cooling	AC DC	(%)	(mm)	Water	500 400	100 4x8	(1.0),1.6,(2.0),(2.4),(3.0),(3.2),(4.0),(4.8),(6.4)
Capacity(A)	Duty	Cable	Applicable Electrode Size														
AC DC	(%)	(m)	(mm)														
Cooling	AC DC	(%)	(mm)														
Water	500 400	100 4x8	(1.0),1.6,(2.0),(2.4),(3.0),(3.2),(4.0),(4.8),(6.4)														

# AW-17 150A/Air Cooled



# AWP-17 150A/Air Cooled



## Standard Parts List

Part No.	Cross REF.	Description	Remarks
①	H81600	Torch Body	for AW-17 including item ②,③
②	H46B04	Torch Body	for AWP-17
③	H500B04	Insulator	
④	H500B05	Gasket	
⑤	H955C13	Collet Body (1.6mm)	Option for AW-17
⑥	H955C15	Collet Body (2.4mm)	
⑦	H955C03	Collet (1.6mm)	
⑧	H955C05	Collet (2.4mm)	
⑨	0970-016	Generated Tungsten Electrode	φ 1.6 × 150mm
⑩	0970-024	Generated Tungsten Electrode	φ 2.4 × 150mm
⑪	H21B19	Nozzle (No.4)	
⑫	H21B20	Nozzle (No.5)	
⑬	H93300	Torch Cap (Long)	
⑭	3570-007	O-ring	
⑮	H64B05	Adapter	
⑯	H81000	Handle	WF516-7 for AWP-17
⑰	H77000	Power Cable Hose	for AWP-17
⑱	H154501	Power Cable Adapter	for 4m Cable
⑲	H110000	Adapter Hose	for 6m Cable
⑳	K1109A00	Torch SW	for 4m Cable
㉑	K1109A00	Torch SW	for 6m Cable

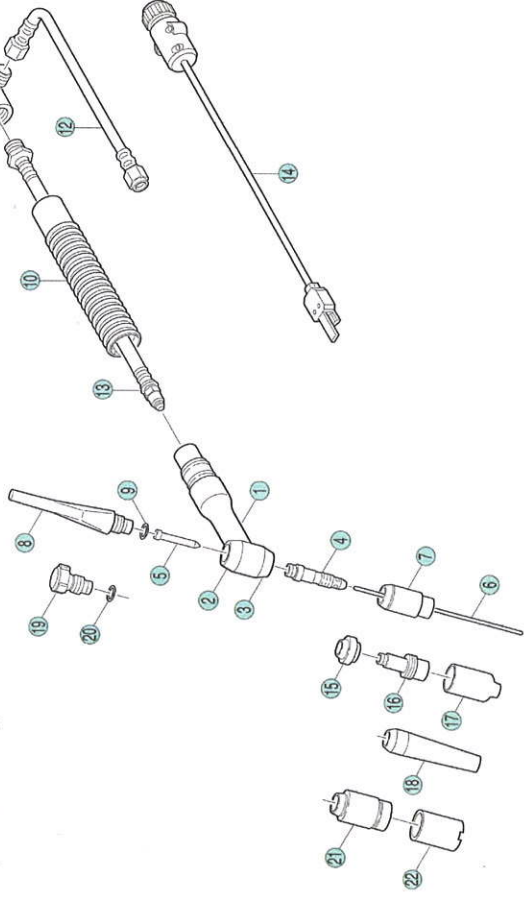
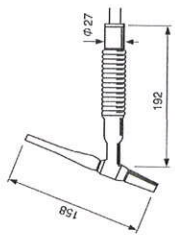
## Optional Parts List

Part No.	Cross REF.	Description	Remarks
④	H955C11	Collet Body (0.5mm)	
⑤	H955C12	Collet Body (1.0mm)	
⑥	H955C14	Collet Body (2.0mm)	
⑦	H955C01	Collet (0.5mm)	
⑧	H955C02	Collet (1.0mm)	
⑨	H955C04	Collet (2.0mm)	
⑩	H21B21	Nozzle (No.6)	
⑪	H21B22	Nozzle (No.7)	
⑫	H21B38	Long Nozzle (No.5L)	
⑬	H21B39	Long Nozzle (No.7L)	
⑭	H85D00	Torch Cap (Short)	
⑮	3570-007	O-ring	WF1516-7
⑯	H21B40	Nozzle (No.4)	Gas Lens
⑰	H21B41	Nozzle (No.5)	Gas Lens
⑱	H21B42	Nozzle (No.6)	Gas Lens
⑲	H21B43	Nozzle (No.7)	Gas Lens
⑳	H21B44	Nozzle (No.8)	Gas Lens
㉑	H21B50	Collet Body (0.5mm)	Gas Lens
㉒	H21B51	Collet Body (1.0mm)	Gas Lens
㉓	H21B52	Collet Body (1.6mm)	Gas Lens
㉔	H21B53	Collet Body (2.4mm)	Gas Lens
㉕	H21B50	Insulator	Gas Lens
㉖	H21B70	Insulating Bush	Gas Lens
㉗	H21B71	Nozzle	Gas Lens
㉘	H21B71	Nozzle	Gas Lens



# AW-26

200A/Air Cooled



### AW-26 Standard Parts List

Part No.	Cross REF.	Description	Remarks
①	H500B00	Torch Body	Including Item ②, ③ & ④
②	H500B04	Insulator	
③	H500B05	Gasket	
④	H950C15	Coil Body (2.4mm)	
⑤	H950C05	Coil (2.4mm)	
⑥	0870-024	Ceriated Tungsten Electrode	φ 2.4 x 150mm
⑦	H21B21	Nozzle (No.6)	
⑧	H83C00	Torch Cap (Long)	
⑨	H500D01	O-ring	W1516-7
⑩	H500D02	Power Cable Adaptor	
⑪	HT3D00	Adaptor Hose	for 4m Cable
⑫	H924D00	Power Cable Hose	for 6m Cable
⑬	H925D00	Power Cable Hose	for 4m Cable
⑭	K1109A00	Torch SW	for 4m Cable
⑮	K1109A00	Torch SW	for 6m Cable

### AW-26 Optional Parts List

Part No.	Cross REF.	Description	Remarks
④	H950C11	Coil Body (0.5mm)	
⑤	H950C12	Coil Body (1.0mm)	
⑥	H950C13	Coil Body (1.5mm)	
⑦	H950C14	Coil Body (2.0mm)	
⑧	H950C16	Coil Body (3.0mm)	
⑨	H950C17	Coil Body (3.2mm)	
⑩	H950C18	Coil Body (4.0mm)	
⑪	H950C01	Coil (0.5mm)	

### AW-26 Standard Parts List

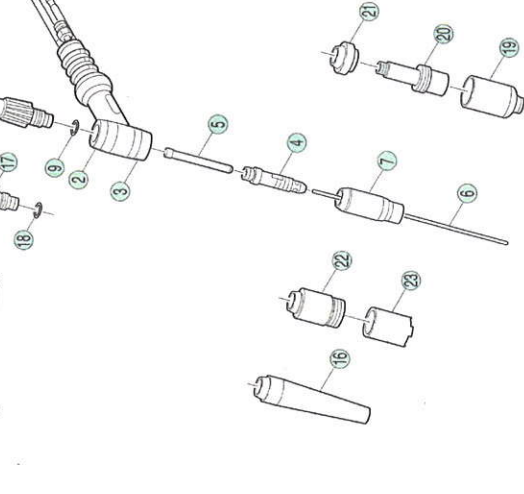
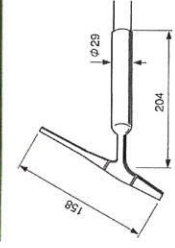
Part No.	Cross REF.	Description	Remarks
①	H950C02	Coil (1.0mm)	
②	H950C03	Coil (1.6mm)	
③	H950C04	Coil (2.0mm)	
④	H950C06	Coil (3.0mm)	
⑤	H950C07	Coil (3.2mm)	
⑥	H950C08	Coil (4.0mm)	
⑦	H21B19	Nozzle (No.4)	
⑧	H21B20	Nozzle (No.5)	
⑨	H21B22	Nozzle (No.8)	
⑩	H21B24	Nozzle (No.7)	
⑪	H21B25	Nozzle (No.12)	
⑫	H21B50	Insulator	
⑬	H21B51	Coil Body (0.5mm)	
⑭	H21B52	Coil Body (1.0mm)	
⑮	H21B53	Coil Body (1.5mm)	
⑯	H21B54	Coil Body (2.0mm)	
⑰	H21B54	Coil Body (2.4mm)	
⑱	H21B54	Coil Body (3.2mm)	
⑲	H21B54	Coil Body (4.0mm)	
⑳	H21B40	Nozzle (No.5)	
㉑	H21B41	Nozzle (No.6)	
㉒	H21B42	Nozzle (No.7)	
㉓	H21B44	Nozzle (No.8)	
㉔	H21B38	Nozzle (No.9)	
㉕	H21B39	Nozzle (No.10)	
㉖	3570-007	O-ring	W1516-7
㉗	H21B70	Insulating Bush	
㉘	H21B71	Nozzle	

### AW-26 Optional Parts List

Part No.	Cross REF.	Description	Remarks
④	H950C11	Coil Body (0.5mm)	
⑤	H950C12	Coil Body (1.0mm)	
⑥	H950C13	Coil Body (1.5mm)	
⑦	H950C14	Coil Body (2.0mm)	
⑧	H950C16	Coil Body (3.0mm)	
⑨	H950C17	Coil Body (3.2mm)	
⑩	H950C18	Coil Body (4.0mm)	
⑪	H950C01	Coil (0.5mm)	

# AW-18

300A/Water Cooled



### AW-18 Standard Parts List

Part No.	Cross REF.	Description	Remarks
①	H950J00	Torch Body	Including Item ②, ③ & ④
②	H500B04	Insulator	
③	H500B05	Gasket	
④	H950C17	Coil Body (3.2mm)	
⑤	H950C07	Coil (3.2mm)	
⑥	0870-032	Ceriated Tungsten Electrode	φ 3.2 x 150mm
⑦	H21B22	Nozzle (No.7)	
⑧	H83C00	Torch Cap (Long)	
⑨	3570-007	O-ring	W1516-7
⑩	H500D01	Handle	for 4m Cable
⑪	U223F01	Hose Seal	for 6m Cable
⑫	U223F01	Hose Seal	for 8m Cable
⑬	K950F00	Gas Hose	for 4m Cable
⑭	K950F00	Gas Hose	for 6m Cable
⑮	H950G00	Cooling Water Hose	for 4m Cable
⑯	H950G00	Cooling Water Hose	for 6m Cable
⑰	H21E00	Power Cable Hose	for 4m Cable
⑱	H21E00	Power Cable Hose	for 6m Cable
⑲	K1109A00	Torch SW	for 4m Cable
⑳	K1109A00	Torch SW	for 6m Cable

### AW-18 Optional Parts List

Part No.	Cross REF.	Description	Remarks
④	H950C11	Coil Body (0.5mm)	
⑤	H950C12	Coil Body (1.0mm)	
⑥	H950C13	Coil Body (1.5mm)	
⑦	H950C14	Coil Body (2.0mm)	
⑧	H950C16	Coil Body (3.0mm)	
⑨	H950C17	Coil Body (3.2mm)	
⑩	H950C18	Coil Body (4.0mm)	

### AW-18 Standard Parts List

Part No.	Cross REF.	Description	Remarks
④	H950C18	Coil Body (4.0mm)	
⑤	H21B19	Nozzle (No.4)	
⑥	H21B20	Nozzle (No.5)	
⑦	H21B21	Nozzle (No.6)	
⑧	H21B23	Nozzle (No.8)	
⑨	H21B24	Nozzle (No.10)	
⑩	H21B25	Nozzle (No.12)	
⑪	H21B38	Long Nozzle (No.9L)	
⑫	H21B39	Long Nozzle (No.7L)	
⑬	H950C01	Coil (0.5mm)	
⑭	H950C02	Coil (1.0mm)	
⑮	H950C03	Coil (1.6mm)	
⑯	H950C04	Coil (2.0mm)	
⑰	H950C05	Coil (2.4mm)	
⑱	H950C06	Coil (3.0mm)	
⑲	H950C08	Coil (4.0mm)	
㉑	H83D00	Torch Cap (Short)	
㉒	3570-007	O-ring	
㉓	H21B40	Nozzle (No.4)	
㉔	H21B41	Nozzle (No.5)	
㉕	H21B42	Nozzle (No.6)	
㉖	H21B44	Nozzle (No.7)	
㉗	H21B44	Nozzle (No.8)	
㉘	H21B50	Coil Body (0.5mm)	
㉙	H21B51	Coil Body (1.0mm)	
㉚	H21B52	Coil Body (1.5mm)	
㉛	H21B53	Coil Body (2.0mm)	
㉜	H21B54	Coil Body (2.4mm)	
㉝	H21B55	Coil Body (3.2mm)	
㉞	H21B55	Coil Body (4.0mm)	
㉟	H21B60	Insulator	
㊱	H21B70	Insulating Bush	
㊲	H21B71	Nozzle	



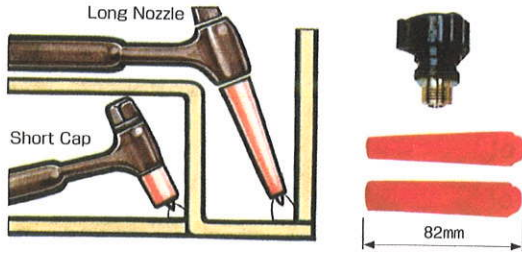
## Optional Parts

### 1. Torch Cap(Short)

Model	AW-9	AWF-9 AW-20	AW(F)-17 AW(F)-26 AW-18	AW-12
Part No.	H13B08	H36C03 (41V33)	H83D00 (57Y04)	H10B11 (56Y45)

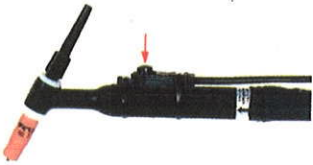
### 2. Long Nozzle

Model	AW(F/P)-17 AW(F)-26 AW-18	
Part No.	No.5L (ID 8mm)	H21B38
	No.7L (ID 11mm)	H21B39



### 3. Push Button Type Torch SW

Cable Length	4m	8m
Part No.	K509B00	K509C00



### 4. Foot Control Switch

Part No.	4259-004
----------	----------



## Cross Reference Parts List FOR AW-17/26/18/12

Description	Model	AW(F)-17	AW(F)-26	AW-18	AW-12
Torch Cap(Long)		H83C00(57Y02)			H10B06(56Y44)
Torch Cap(Short)		H83D00(57Y04)			H10B11(56Y45)
Collet	0.5mm	H950C01(10N21)			
	1.0mm	H950C02(10N22)			H10C10
	1.6mm	H950C03(10N23)			H10C11(85Z14)
	2.0mm	H950C04			
	2.4mm	H950C05(10N24)			H10C12(85Z15)
	3.0mm	H950C06			
	3.2mm	H950C07(10N25)			H12B33(85Z16)
	4.0mm	H950C08(54N20)			
	4.8mm				H12B34(85Z18)
	6.4mm				H12B35(85Z19)
Collet Body	0.5mm	H950C11(10N29)			
	1.0mm	H950C12(10N30)			
	1.6mm	H950C13(10N31)			H12B30
	2.0mm	H950C14			
	2.4mm	H950C15(10N32)			
	3.0mm	H950C16			
	3.2mm	H950C17(10N28)			
	4.0mm	H950C18(406488)			
	4.8mm				H12B31
	6.4mm				
Standard Nozzle (Ceramic)	No.4	H21B19(10N50)			H12B15(14N57)
	No.5	H21B20(10N49)			H12B16(14N58)
	No.6	H21B21(10N48)			H12B17(14N59)
	No.7	H21B22(10N47)			H12B18(14N60)
	No.8	H21B23(10N46)			H12B19(14N61)
	No.10	H21B24(10N45)			
	No.12	H21B25(10N44)			
	Nozzle (Metal)	No.6			
No.8					H12B21(86Z02)
No.10					H12B22(86Z03)
No.12					H12B23(86Z06)
Gas Lens Collet Body	0.5mm	H21B50(45V29)			
	1.0mm	H21B51(45V24)			
	1.6mm	H21B52(45V25)			
	2.4mm	H21B53(45V26)			
	3.2mm	H21B54(45V27)			
	4.0mm	H21B61(45V28)			
Gas Lens Nozzle (Ceramic)	No.4	H21B40(54N18)			
	No.5	H21B41(54N17)			
	No.6	H21B42(54N16)			
	No.7	H21B43(54N15)			
No.8	H21B44(54N14)				

In accordance with DAIHEN's policy to make continuing improvements, design and/or specifications are subject to change without notice and without any obligation on the part of manufacturer.



### HEADQUARTERS

DAIHEN Corporation  
International Department  
5-1 Minamisenrioka  
Settsu, Osaka 566-0021, Japan  
Tel: +81-6-6317-2506 Fax: +81-6-6317-2583

### ASIA

Mudanjiang OTC Welding Machines Co., Ltd. No. 119 Hailin Road Aimin, Mudanjiang Heilongjiang 157011 China Tel: +86-453-650-0690 Fax: +86-453-650-0065	DAIHEN Asia(Thailand)Co., Ltd. 60/86 Mu 19 Navanakorn Ind. Estate Phase 3 Klong Nueng, Klong Luang Pathumthani 12120, Thailand Tel: +66-2-909-4163~5 Fax: +66-2-909-4166	OTC(Taiwan)Co., Ltd. No. 14, Non Hwa 1 Street, Lu Chu Hsiang, Tao Yuan Hsien, Taiwan, R. O. C. Tel: +866-3-312-8663 Fax: +866-3-312-8663
---	--	---

### EUROPE

DAIHEN Europe GmbH  
Krefelder Str. 677  
D-41066 Mönchengladbach  
F.R. Germany  
Tel: +49-2161-6949710  
Fax: +49-2161-6949711

### AMERICA

DAIHEN, Inc. Advanced Welding Division 5311 W.T. Harris Blvd. West Charlotte, N.C. 28269 U.S.A. Tel: +1-704-597-8240 Fax: +1-704-333-9790	DAIHEN, Inc. Dynamic Robotics Division 761 Crossroads Court Vandalia, O.H. 45377 U.S.A. Tel: +1-937-454-9660 Fax: +1-937-454-9661
---	---