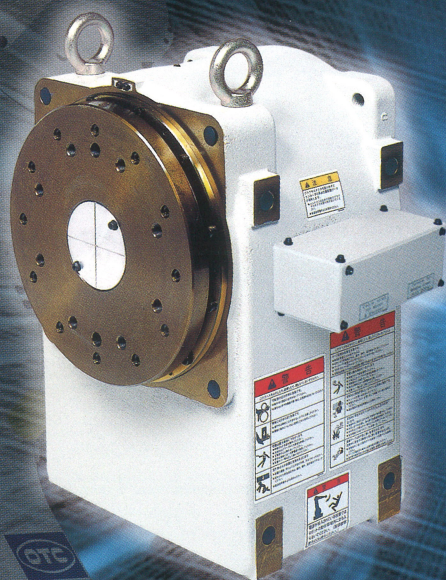


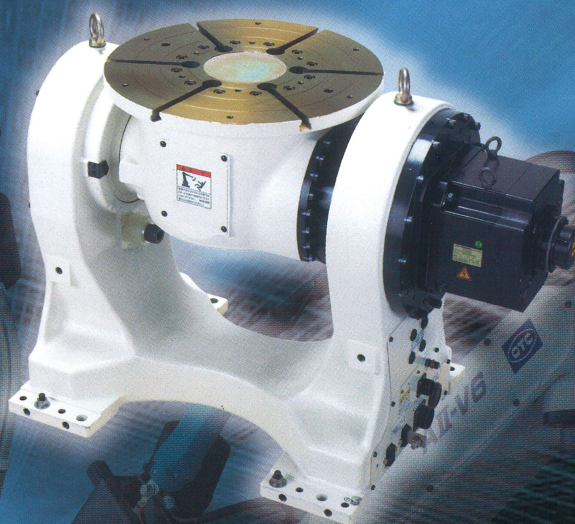


**AII Series**

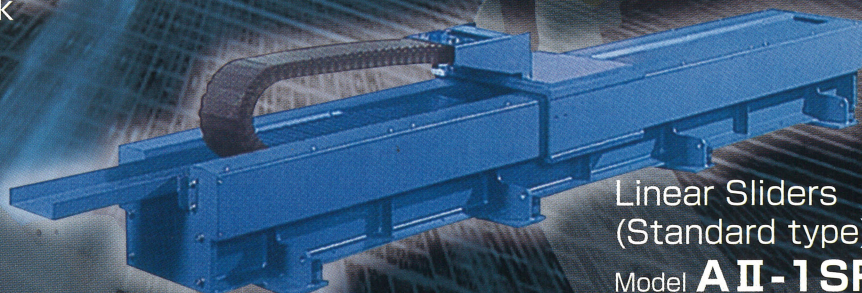
# POSITIONER/ SLIDER



Positioner Headstock  
Model **AII-1PB**



2-Axes Double Support  
Positioner  
Model **AII-2PF**



Linear Sliders  
(Standard type)  
Model **AII-1SR**



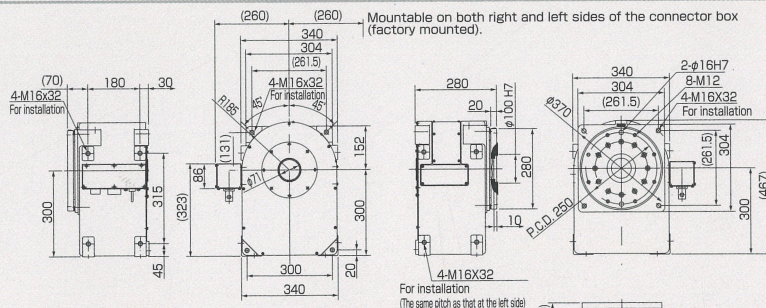
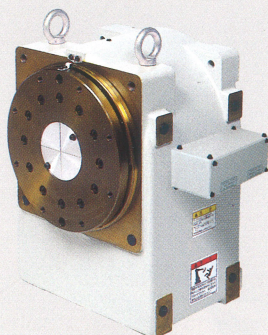
# POSITIONER

- ① 6 models of positioners available from 250kg to 1,000kg payload capacity.
- ② Operation of the positioner is totally controlled by the robot teaching pendant.
- ③ Positioners can be operated independently or synchronized with the robot.
- ④ High accuracy operation is made possible by the same AC servo motor and non-backlash reduction.
- ⑤ Synchronized motion when using with DAIHEN Robot.

## Positioner Headstock Model **AII-1PB**

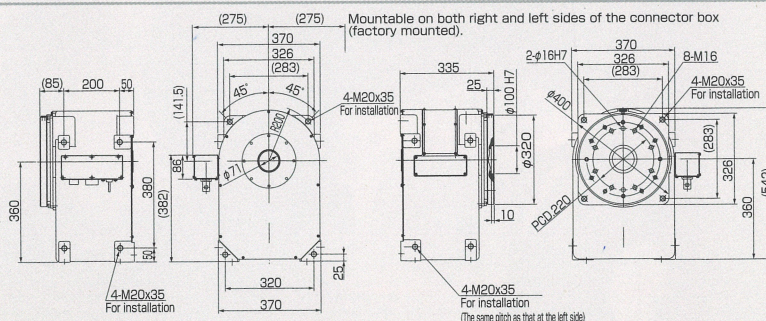
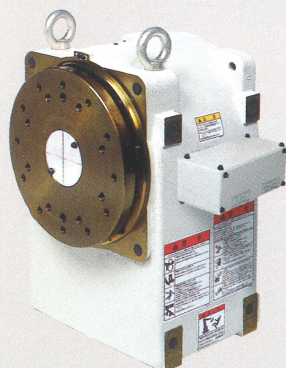
- The 5 sides of the housing are provided with tapped mounting holes, which permit random mounting positions allowing various jig systems to be set up.
- A hole through the center of the rotary table, enabling cables and hoses to be routed through easily.
- A secondary terminal for welding (500A) is provided as standard built-in equipment.
- This positioner can be used as a single-axis double support positioner in combination with the tail stock and stand (Option).
- The application signal cable and 4 air inlet ports can be fed through the center of the table. (Option)
- The voltage detection wire and the connection terminal to let the low spatter welding power supply DL350 perform optimally are provided as standard.

### ■ AII-1PB250



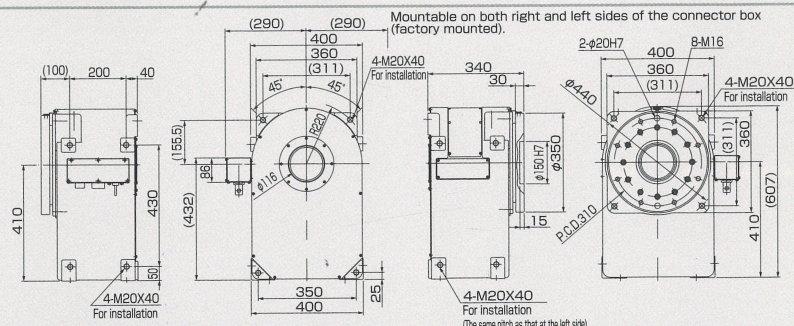
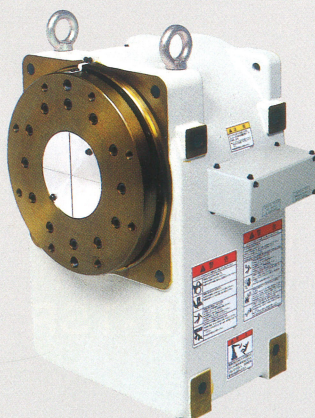
Name	Positioner Headstock
Model name	A2PB252-E
Max. Payload Capacity	250kg
Rotating Speed	2.6rad/s (150°/s)
Allowable Rotating torque	208N·m
Position Repeatability	±0.1 mm (Position at R300mm)
Stop Position	Random
Mass (Weight)	110kg

### ■ AII-1PB500



Name	Positioner Headstock
Model name	A2PB502-E
Max. Payload Capacity	500kg
Rotating Speed	2.1rad/s (120°/s)
Allowable Rotating torque	490N·m
Position Repeatability	±0.1 mm (Position at R300mm)
Stop Position	Random
Mass (Weight)	170kg

### ■ AII-1PB1000



Name	Positioner Headstock
Model name	A2PB1002-E
Max. Payload Capacity	1000kg
Rotating Speed	1.3rad/s (72°/s)
Allowable Rotating torque	1078N·m
Position Repeatability	±0.1 mm (Position at R300mm)
Stop Position	Random
Mass (Weight)	220kg



## 2-Axes Double Support Positioner

Model **A II-2PF**

### High-speed motion increases production efficiency!

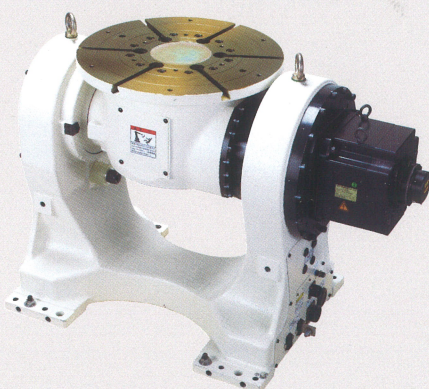
An increase in the maximum rotation speed of the tilting axis by 2.5 times and in rotation axis by 2 times was achieved in comparison with the conventional machine 300 kg payload type.

### Continuous welding (100% duty cycle) at 500A can be standard.

Providing a collecting brush additionally as an option can increase the maximum welding current up to 1000A at 60% duty cycle.

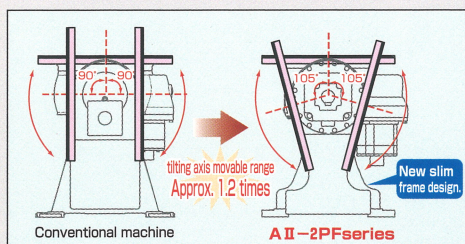
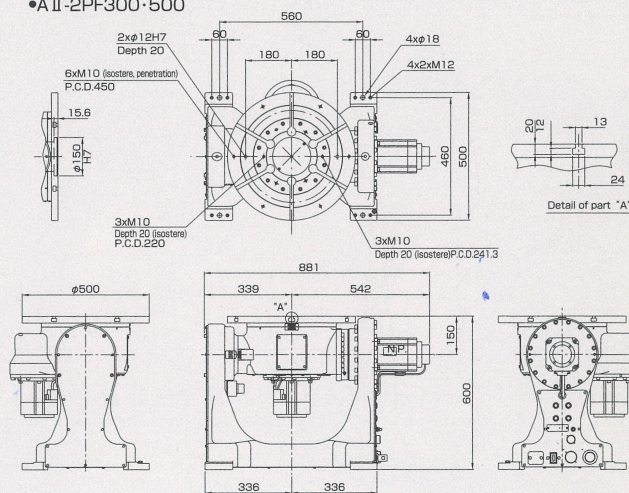
### Our product line includes a model with a maximum payload capacity of 1000 kg, for large workpieces.

#### ■ A II-2PF300·500·1000



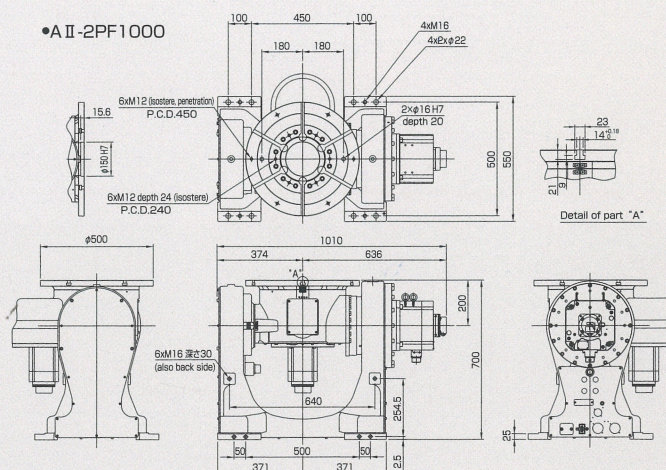
A II-2PF1000

#### ● A II-2PF300·500



- Streamlining of the frame increases the movable range of the inclined axis by 1.2 times in comparison with that of the conventional machine. (※1)
- (※1) The ratio in case of mounting a jig and workpiece (φ600mm or less) larger than that of the face plate
- Because the inclined axis falls down to both sides (±135°), a workpiece can be carried in and out easily and an optimal welding posture can be taken.
- The application cable (for signal) and 4 air inlet ports can be fed through the center of the table. (Option)
- The voltage detection wire and the connection terminal to let the low spatter welding power supply DL350 perform optimally are provided as standard.

#### ● A II-2PF1000

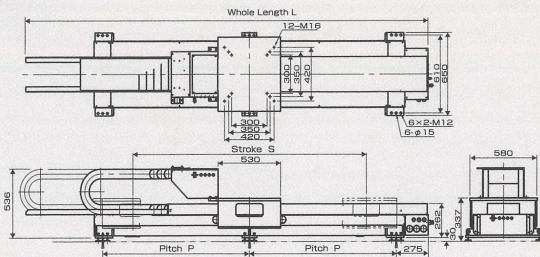
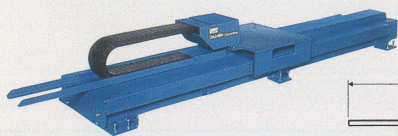


Name	2-Axes Double Support Positioner		
Model name	A2PF301-ENN	A2PF501-ENN	A2PF1001-ENN
Max.Payload Capacity	300kg	500kg	1000kg
Rotating Speed	3.1rad/s {180°/s}	2.8rad/s {162°/s}	2.9rad/s {166°/s}
Tilting Speed	2.2rad/s {125°/s}	1.5rad/s {84°/s}	1.4rad/s {82°/s}
Rotating Torque	294N·m	392N·m	882N·m
Tilting Torque	882N·m	1347N·m	3704N·m
Position Repeatability	±0.08mm(Position at R250mm)	±0.08mm(Position at R250mm)	±0.08mm(Position at R250mm)
Stop Position	Random	Random	Random
Mass(Weight)	260kg	260kg	470kg



- ① Sliders are available in 12 models with strokes between 1m and 6.9m.
- ② Employment of an AC servo motor and non-backlash reduction gear provides the same high accuracy operation as that of robots.
- ③ The slider can be totally controlled by hand with the robot teaching pendant, and can be independently operated or synchronized with the robot.
- ④ Combination with the DAIHEN robot allows synchronized operation.
- ⑤ The cable bearer is provided in the center of the slider, which allows space-saving installation.

## Linear Sliders (Light Duty) Model AII-1SB



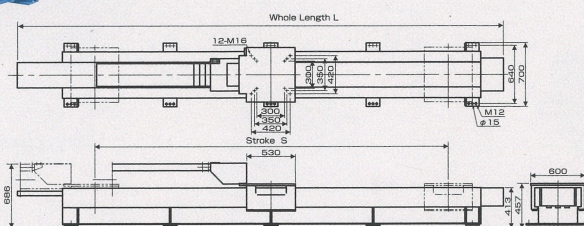
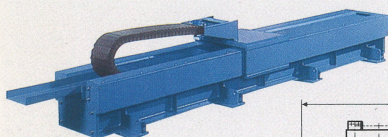
- A maximum of 330 Kg can be loaded.
- Dust-proof structure prevents spatter, oil and dust from entering.

※When the DAIHEN AII-V6L,V20 is mounted, be careful that the total weight, including that of other machines, does not exceed the maximum payload.

Name	Light Sliders
Model name	A2SB102-E, A2SB202-E
Stroke Length	1m, 2m
Max.Moving Speed	0.3m/s
Max.Mounting Capacity	330kg
Position Repeatability	±0.1mm

Model	Stroke S(mm)	Whole Length L(mm)	Mass(kg)
A2SB102-E	1000	2510	450
A2SB202-E	2000	3510	550

## Linear Sliders (Standard Duty) Model AII-1SR

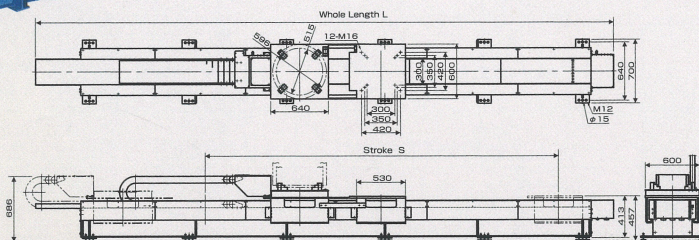
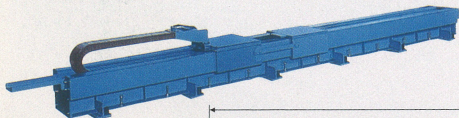


- Standard Duty with a maximum loading weight of 330Kg
- Dust-proof structure prevents spatter, oil and dust from entering.

Name	Standard Sliders
Model name	A2SR292-E, A2SR392-E, A2SR492-E, A2SR592-E, A2SR692-E
Stroke Length	2.9m, 3.9m, 4.9m, 5.9m, 6.9m
Max.Moving Speed	0.295m/s
Max.Mounting Capacity	330kg
Position Repeatability	±0.1mm

Model	Stroke S(mm)	Whole Length L(mm)	Mass(kg)
A2SR292-E	2900	4500	650
A2SR392-E	3900	5500	750
A2SR492-E	4900	6500	850
A2SR592-E	5900	7500	950
A2SR692-E	6900	8500	1050

## Linear Sliders (with carriage Duty) Model AII-1SR-P



- The wire pack can be mounted on the truck connected to the robot-mounting part.
- Dust-proof structure prevents spatter, oil and dust from entering.

Name	Carriage Sliders
Model name	A2SR19P2-E, A2SR29P2-E, A2SR39P2-E, A2SR49P2-E, A2SR59P2-E
Stroke Length	1.9m, 2.9m, 3.9m, 4.9m, 5.9m
Max.Moving Speed	0.295m/s
Max.Mounting Capacity	660kg (330kg for each table)
Position Repeatability	±0.1mm

Model	Stroke S(mm)	Whole Length L(mm)	Mass(kg)
A2SR19P2-E	1900	4500	800
A2SR29P2-E	2900	5500	900
A2SR39P2-E	3900	6500	1050
A2SR49P2-E	4900	7500	1150
A2SR59P2-E	5900	8500	1200

In accordance with DAIHEN's policy to make continuing improvements, design and/or specifications are subject to change without notice.

### DAIHEN Corporation

4-1, Koyochonishi, Higashinada-ku, Kobe, Hyogo 658-0033, Japan  
 Phone: (Country Code 81) 78-275-2006  
 Fax: (Country Code 81) 78-845-8159

Distributed by :

1.2010.3BD  
 PRINTED IN JAPAN

#### Note

This product and the technologies (including software) used in the product are subject to Catch-All Controls. When exporting any of them, verify the users, applications, etc. according to the applicable laws and regulations and take appropriate procedures such as applications for export permission to the Minister of Economy, Trade and Industry if required.

- The information contained in this catalog is current as of June 2009 and is subject to revision without notice.
- This catalog was printed with environmentally-friendly soy oil ink.

