

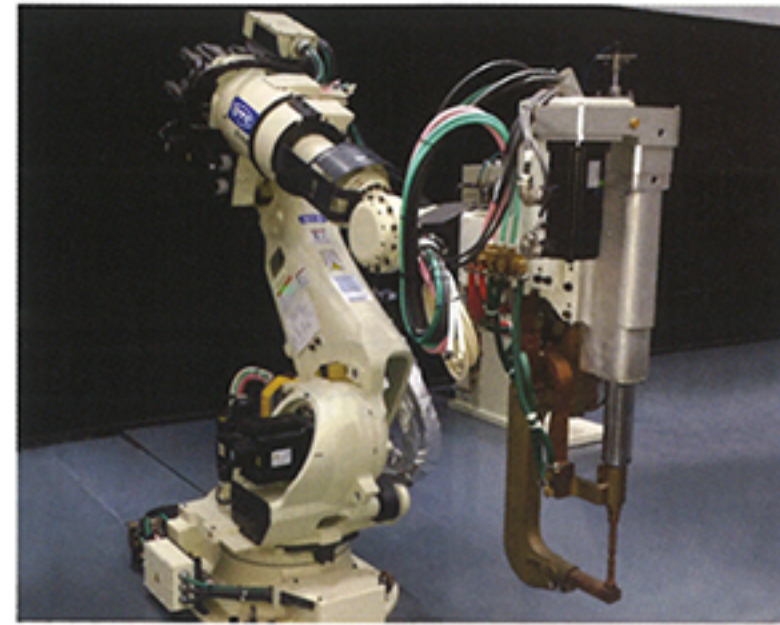


Can be used in close proximity to arc welding applications.

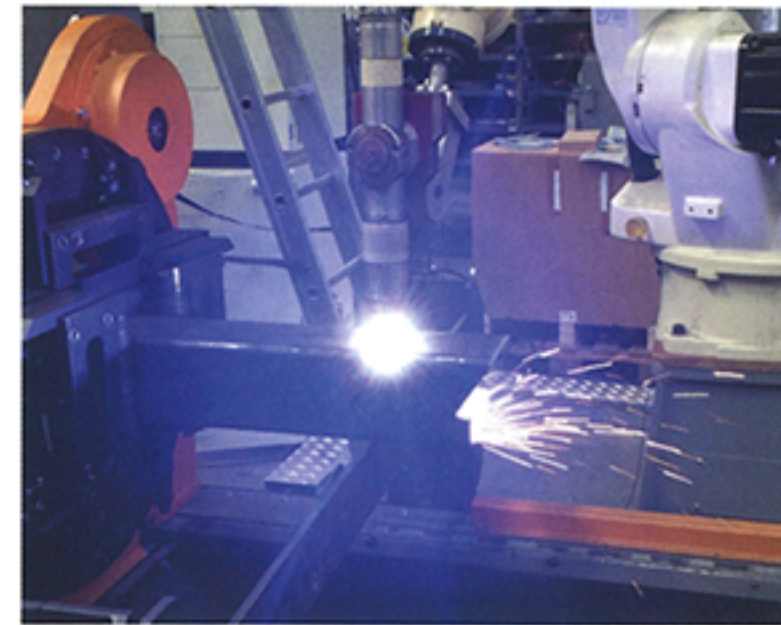
Example applications



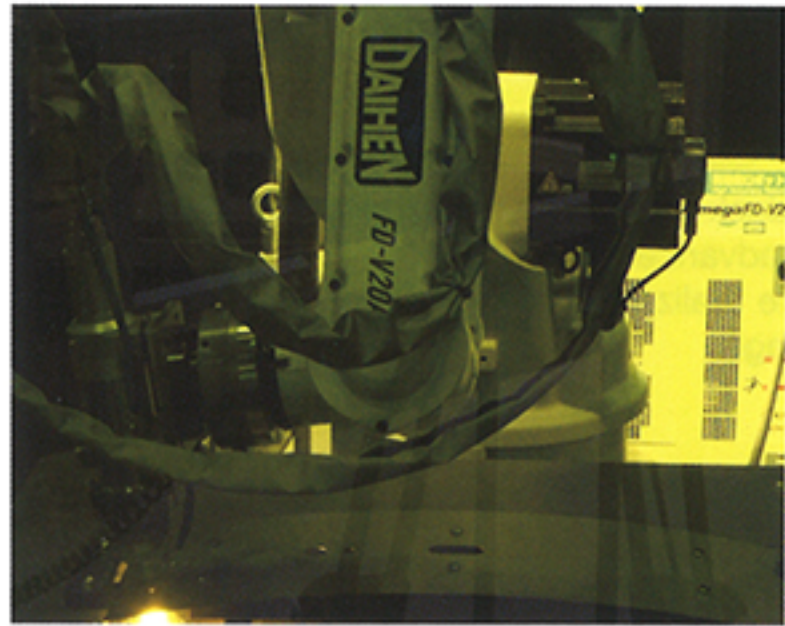
Handling for transformer case



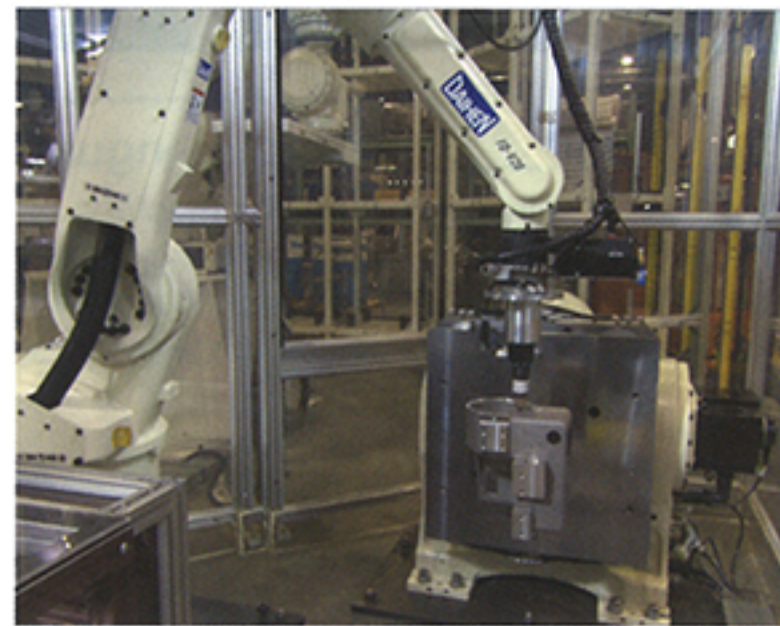
Spot Welding



Plasma Cutting on steel frame (square pipe)



Laser Cutting on 3D shape



Edge Trimming (Deburring)



Sealing (Glue pasting)

In accordance with DAIHEN's policy to make continuing improvements, design and/or specifications are subject to change without notice and without any obligation on the part of manufacturer.

DAIHEN Corporation

4-1, Koyochi-nishi, Higashinada-ku, Kobe, Hyogo 658-0033, Japan
 Phone: (Country Code 81) 78-275-2006
 Fax: (Country Code 81) 78-845-8159

Distributed by:

Note This product and the technologies (including software) used in the product are subject to Catch-All Controls. When exporting any of them, verify the users, applications, etc. according to the applicable laws and regulations and take appropriate procedures such as applications for export permission to the Minister of Economy, Trade and Industry if required.

● The information contained in this catalog is current as of April 2017 and is subject to revision without notice.
 ● This catalog was printed with environmentally-friendly vegetable oil ink.

CAT NO.R21634 8.2017.TP PRINTED IN JAPAN



Almega Friendly series

HANDLING ROBOT

Light – Heavy payloads (5 – 210 kg)

User-friendly operation to every field

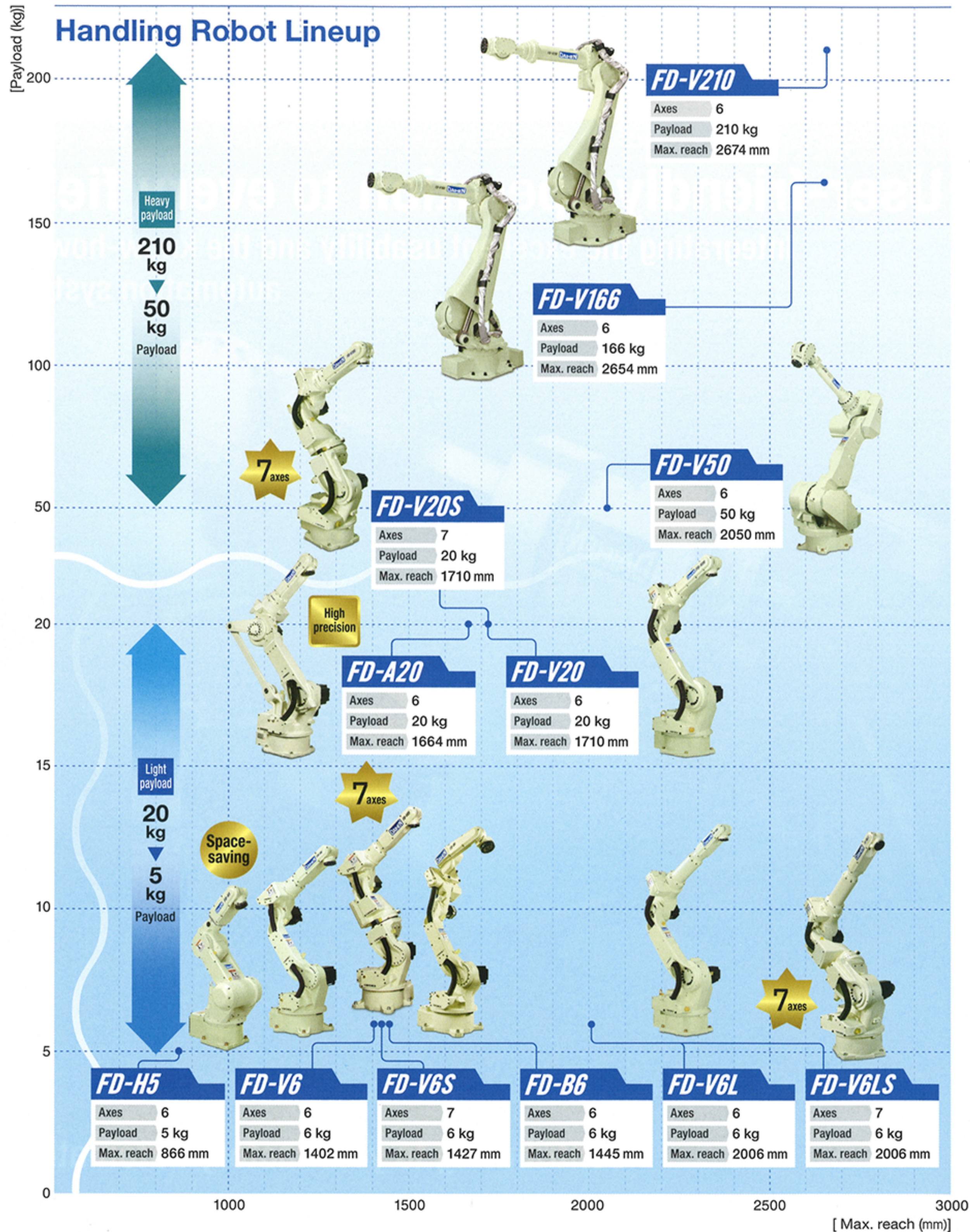
Integrating the excellent usability and the know-how of automation system



Contributing to your factory automation

Lineup of arms provided to meet various functions and scenes

Providing the Compact & space-saving robot, Heavy payload robot, High-precision robot, 7-axis robot, etc., applicable to Handling, Spot welding, Assembling, Edge trimming (Deburring), Sealing, Cutting and others.



More flexible production system is achieved by Handling robot

Advantage

Improving the productivity

Drastic improvement in the operation efficiency is expected by adopting robots to non-Arc welding processes.

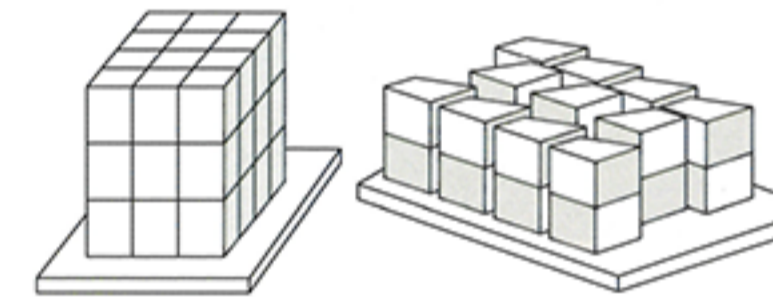
Good for production of wide varieties in small quantities

For example, the freedom in Load-Weld-Unload process is enhanced by using a handling robot. Production of wide varieties in small quantities can be also managed.

Enriched various functions

Palletizing Function

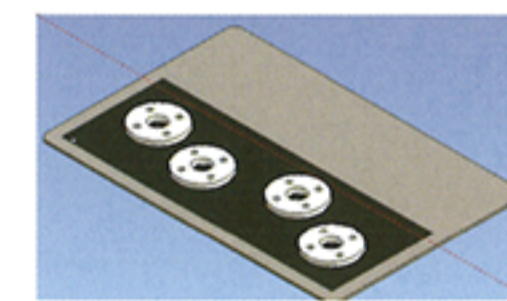
Just teaching the palletizing/depalletizing motion for a single workpiece and specifying the total number of workpieces, the method of palletizing/depalletizing, and the allocation of workpieces make it easy to manage the teaching for all types of workpieces.



In addition to the basic loading such as stacking vertical or flat, it is also available to load the workpiece of various shapes with different lengths in left/right side, or to load them in different directions in each row and level.

Vision Sensor Function

Easy connection to the vision sensor. Wider application is realized such as automatically picking the workpieces randomly placed.



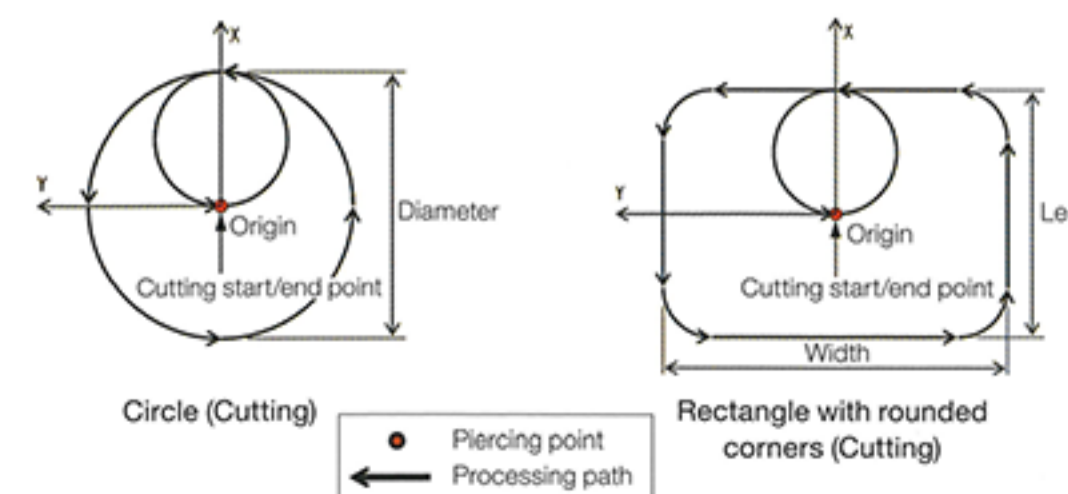
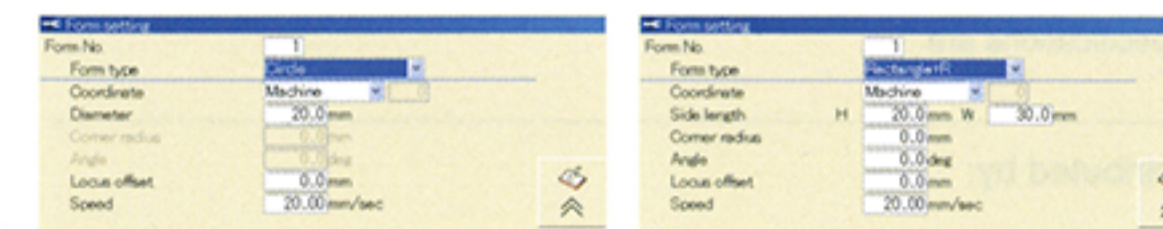
Randomly placed workpieces



Detection by vision sensor

Auto-Programming for Laser Cutting

The basic cutting patterns can be automatically created on TP by one-touch operation.



Reducing operator's work burden

Carrying heavy components by robot, operator's work burden can be reduced.

Improving the welding quality

The optimum welding is always realized by the coordinated motion by the arc welding robot and the handling robot to carry welding parts.

Robot Language

Off-line teaching on desk and programming with the advanced calculation command are realized by using the robot language.

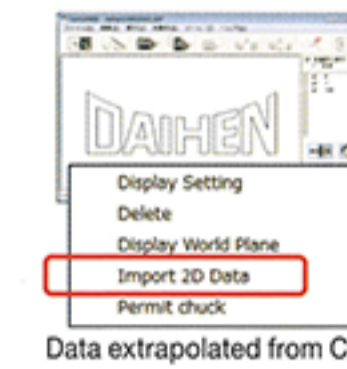


Off-line Teaching System FD-ST

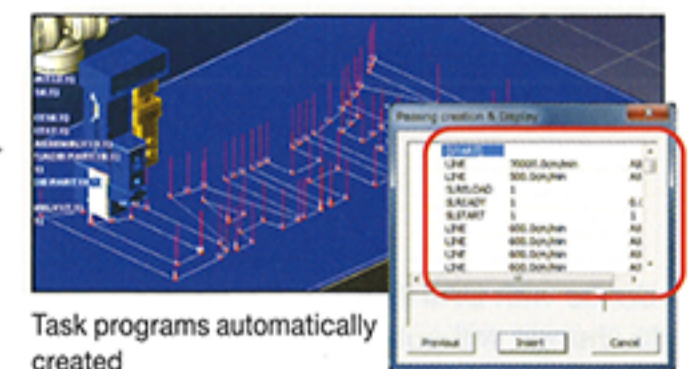
Simulation for chucking/unchucking the workpiece is available, drastically reducing the verification time implemented by the actual equipment.



The robot task programs can be automatically created from CAD data by one-touch operation. Then, directly transferred to the robot controller.



Data extrapolated from CAD



Task programs automatically created

Exclusive command for spot welding

The exclusive command for spot welding is standardized. The spot welding sequence also can be easily taught.

